



i-Vertex

i-VERTIX: LOG & DATA MANAGEMENT



Overview

i-Vertex Log & Data Management is a scalable platform for centralized log collection, normalization, storage, and analysis across heterogeneous and distributed IT environments.

It securely ingests logs from infrastructure, operating systems, applications, cloud platforms, and network devices, providing real-time visibility for operational troubleshooting, security monitoring, compliance, and forensic analysis.

The solution can operate as a standalone log management platform or as a preprocessing layer in front of an existing SIEM, reducing ingest volume and operational costs by filtering, normalizing, and enriching log data before forwarding high-value events.

Key Capabilities

- Centralized log collection from on-premises, cloud, and distributed environments
- Real-time parsing, normalization, classification, and enrichment
- Secure log archival with integrity validation and evidential value
- Multi-tenant architecture with granular RBAC
- Scalable deployment from single-node to distributed, high-availability clusters
- Optional traffic flow ingestion (NetFlow family, sFlow, IPFIX)

LICENSING

- Licensed per Data Node & Log Collector
- Ideal for enterprise and MSP multi-tenant setups

DEPLOYMENT MODELS

- On-premises, private/public cloud, hybrid, centralized/distributed
- Virtual appliances for on-premises or cloud

SUPPORTED DATA SOURCES

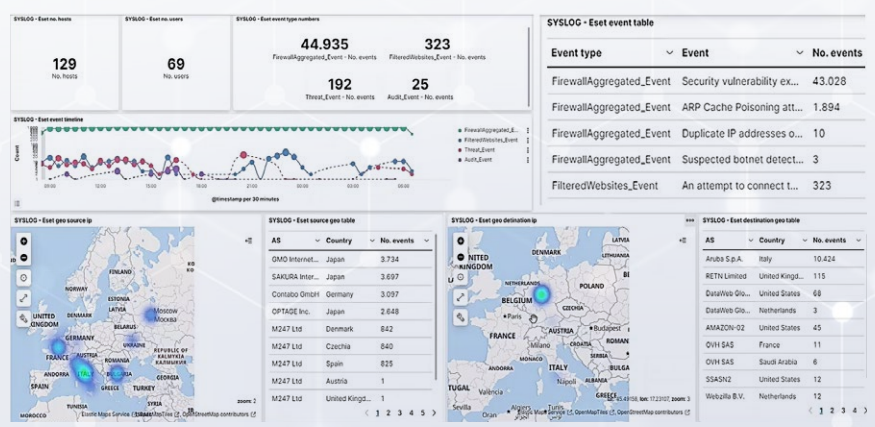
- Syslog, Windows Event Logs, cloud audit logs, CEF, NetFlow, sFlow, IPFIX
- Web, DNS, mail, custom sources

SECURITY & COMPLIANCE

- Tamper-proof storage, timestamp validation, compliance support

SCALABILITY & AVAILABILITY

- Distributed, multi-tenant, high-availability, and clustering support
- SIEM integration, external threat intelligence, and blocklist support



Log Collection and Processing

The platform continuously collects and processes logs in real time, supporting high data volumes without sacrificing performance.

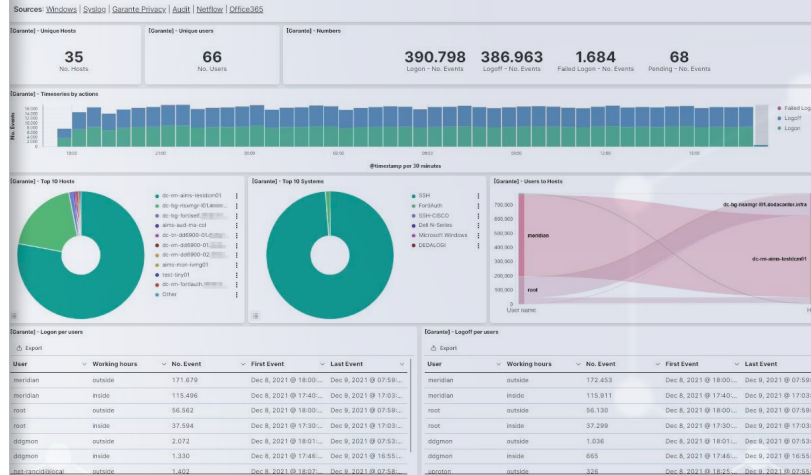
Each event is:

- Parsed and normalized into a consistent format
- Classified according to predefined or custom rules
- Enriched with contextual information
- Digitally signed, compressed, encrypted, and archived

This approach ensures data integrity, traceability, and long-term reliability for operational and compliance use cases.



Authentication & Access Analysis



i-Vertix Log&Data Management consolidates authentication events across heterogeneous platforms, including:

- Windows and Linux systems
- Office 365
- Network and storage devices
- Enterprise platforms (e.g., IBM iSeries)

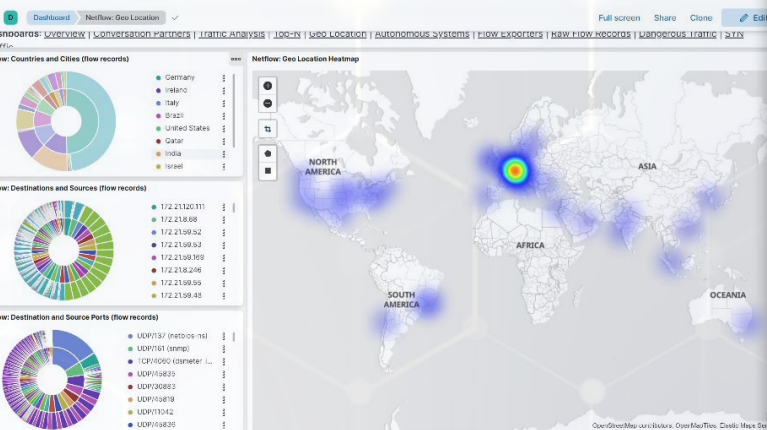
All authentication events (logins, failures, logoffs) are normalized, enabling a unified view of access activity across the entire IT environment.

Network Traffic Log Analysis

The platform can ingest and analyze traffic flow records and traffic-related logs, including:

- NetFlow (v5, v9, IPFIX)
- sFlow
- jFlow
- CEF-based traffic logs

This enables visibility into traffic behavior, anomaly detection, and identification of suspicious or malicious sources.



Compliance and Data Protection Support

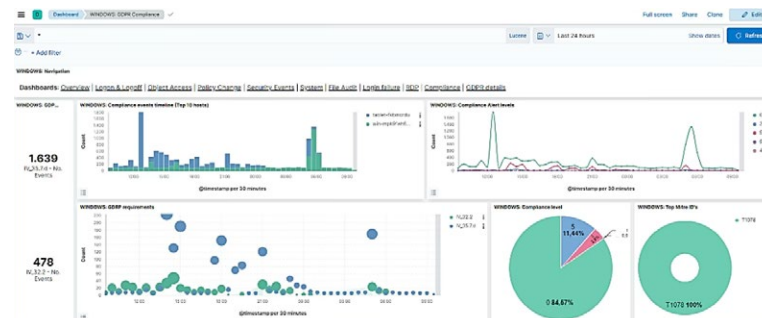
i-Vertix supports compliance and data protection requirements through:

- Secure, tamper-proof log storage
- Digital signatures and timestamp validation
- Classification rules aligned with regulatory and security frameworks

Built-in rules support common standards, including:

- GDPR
- PCI DSS
- HIPAA
- NIST 800-53
- TSC

The platform can integrate with external threat intelligence feeds and blocklists to enhance detection of suspicious activity and early indicators of compromise.



Architecture Overview

i-Vertex Log & Data Management uses a distributed, multi-tier architecture consisting of:

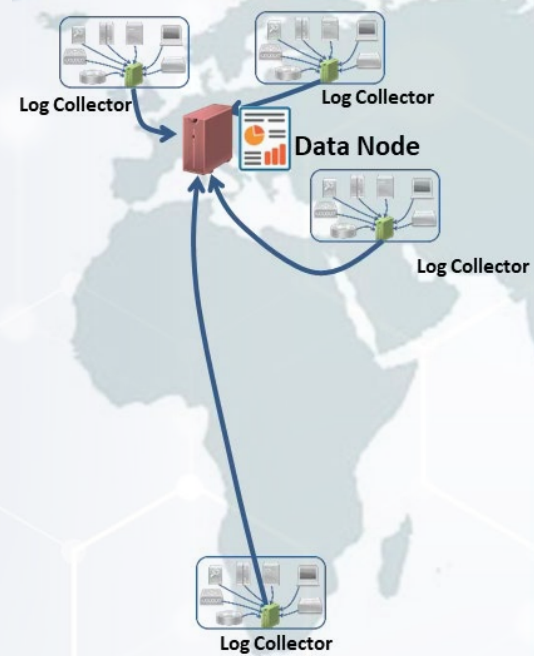
i-Vertex Log Collector (iLC)

- Deployed close to log sources
- Collects, parses, normalizes, encrypts, and archives logs locally
- Provides secure, signed storage for evidential purposes

i-Vertex Data Node (iDN)

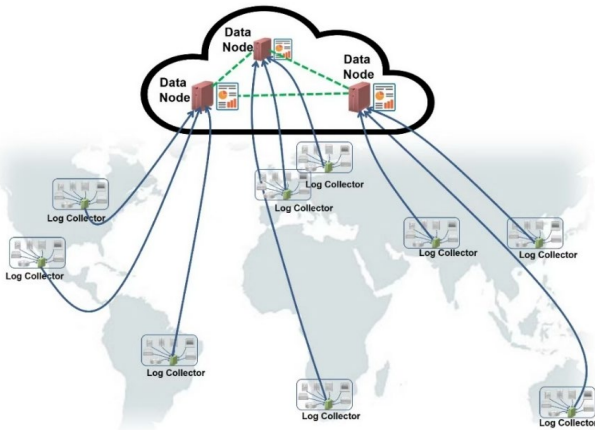
- Central aggregation, processing, and analysis component
- Deployable on-premises or in private/public cloud
- Supports clustering, load balancing, and high availability

Communication between components is secured via HTTPS/TLS.



Deployment Models

- Single Data Node with distributed Log Collectors
- Multi-Data Node high-availability cluster
- On-premises, private cloud, public cloud, or hybrid deployments
- MSP-ready, multi-tenant environments



Supported Data Sources (Examples)

- Syslog (RFC 3164 / RFC 5424)
- Windows Event Logs
- Office 365 audit logs
- CEF
- NetFlow / sFlow
- Web servers (IIS, Apache)
- DNS, Exchange
- Citrix NetScaler

Collection is agentless where possible or via lightweight forwarders (e.g., Nxlog, Filebeat).



Licensing and Sizing Considerations

The solution is licensed per:

- Data Node
- Log Collector

Sizing depends on:

- Number and type of log sources
- Average logs-per-second (LPS)
- Log retention period
- Deployment topology (centralized vs distributed)
- High availability requirements
- Optional traffic flow analysis (FPS, retention)

Platform Requirements

- Delivered as virtual appliances
- Supported hypervisors and clouds:
 - VMware, Hyper-V, KVM, Nutanix AHV, Sangfor
 - AWS EC2, Microsoft Azure

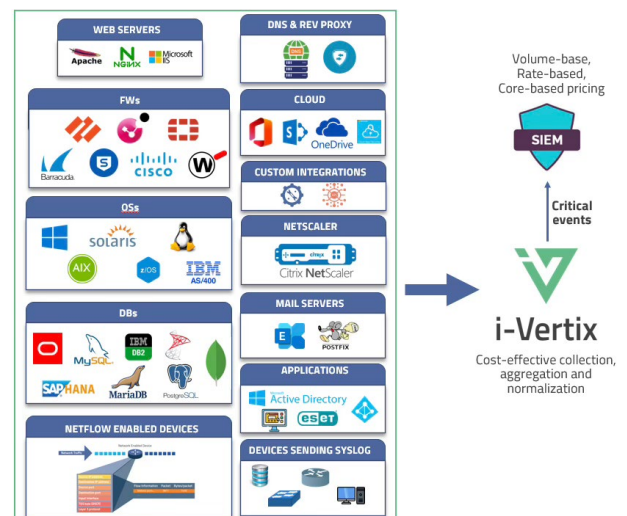
Minimum requirements vary by role and workload and must be sized according to expected log volume.

SIEM Optimization & Log Preprocessing

In environments where a SIEM is already deployed, i-Vertix acts as an intelligent preprocessing layer by:

- Aggregating and normalizing logs from diverse sources
- Filtering low-value or noisy events
- Enriching and classifying data before forwarding
- Reducing SIEM ingest volume and storage requirements

Only relevant, high-value events are forwarded to the SIEM, improving efficiency and cost control.



About i-Vertix

i-Vertix is an IT management software company, developing solutions for enterprises and MSPs. The company's team has over 50 years of combined experience in IT monitoring, performance management, and operational oversight across network, infrastructure, and application environments.



Headquarter
NOI TechPark
D1

Hypatiastraße 2
39100 Bozen
Italien

+39 0471 143 01 70
sales@i-vertix.com
www.i-vertix.com



BOOK A FREE DEMO